



3 Sigma Company & Product Overview

Company Overview

Established in 1980, 3 Sigma is a rapidly growing, resourceful innovator of unique pressure sensitive coated products. 3 Sigma's commitment to you, our customer, is to continuously seek ways to address and improve critical business needs: speed of development and commercialization, product efficiency, product performance and quality. Our team has the necessary expertise to consistently produce superior products that meet your requirements.



Our customer service and technical associates will work with you to develop and manufacture custom constructions that allow you to provide innovation to your end-user and differentiate yourself from your competition. All of 3 Sigma's associates are focused on assuring a "customer-friendly" experience that offers:

- Easy access to decision makers and technical staff
- Flexible & responsive production with quickest turn-around times in the industry.
- Utilization of facility for design and trial projects
- Production volumes and product designs that meet your needs, not ours.

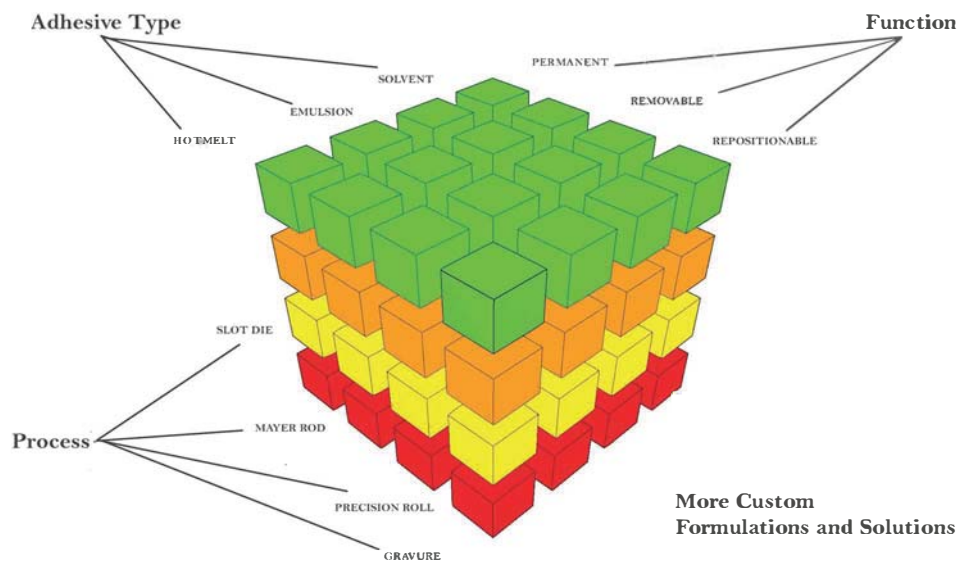
3Sigma is an ISO9001:2015 certified company dedicated to creating "Fit For Use" solutions for our customers.



Company Overview

Since our start in 1980, we have continued to refine our material and process technologies to provide customers with a level of service that is unmatched by our competition. Our multiple coating lines and coating methods give us a wide range of manufacturing flexibility, necessary to meet the demands of the industry. Our manufacturing associates are trained to handle the considerable number of job changeovers and set-ups necessary to rapidly meet custom product production in a very short lead-time window. We are one of the few companies who offer hot-melt, emulsion, and solvent based adhesives under one roof. In summary, our company is one of the most versatile manufacturers in the pressure sensitive industry.

The versatility of our company allows us to offer you more design options, quicker production, and the opportunity to grow through diversification and speed of service. The key to success in most markets today is to be more innovative and faster than your competition. 3 Sigma helps you achieve this through formulating custom constructions based on market and application expertise. Our product development specialists have many years of experience and understand the critical characteristics of each component in label and tape constructions. They are highly skilled on designing the proper combination of product attributes and functional features that will ensure optimal "fitness for use."



3 Sigma offers an extensive line of proprietary products extending into various markets and industries. Our broad base of product technologies and offerings accelerate the impact of business initiatives, such as waste reduction, cost containment, market expansion and new product development. 3 Sigma's Key Customer Markets are:

- Food and Beverage and Packaging
- Business Forms/Direct Mail
- Graphics
- Product Security
- Industrial/Technical
- Medical, Pharmaceutical, Health & Beauty

Food and Beverage Market

Products/ Applications

- Coupons
- Coupons with pattern adhesives
- Package reclosures (Anchor Seal)
- Wine Labels
- Beverage/Bottle labels
- Overlaminates
- Shelf marking
- Specialty prime label
- Fluorescent price marking
- Break away films
- Sigma-scan
Direct food contact adhesives
- All temp and freezer grade adhesives

Features and Benefits

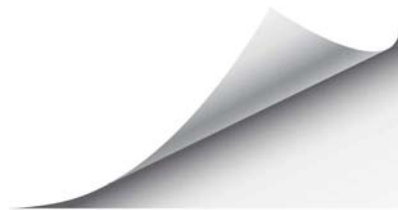
- Universal "lift anywhere" coupons
- Consistent easy converting
- Diversification from "commodity" products
- Cost-effective package and sealing alternatives
- Multiple functionality
- True value-added products
- Highly engineered application performance



Promotional, Advertising and Signage Markets

Products/ Applications

- Mail Labels (direct mail magazines)
- News labels (newspapers)
- Wall graphics
- Temporary signage
- Temporary/portable video screens
- Page flags or markers



Features and Benefits

- Multiple materials and colors
- Durability for high-speed machine application
- Ability to remove and reapply
- No residue or adhesive transfer
- No ghosting on clear frosted surfaces
- Long life and performance

Business Forms and Direct Mail

Products/ Applications

- Integrated Cards
- Affixed Cards
- Integrated labels
- Affixed Labels
- Magnetic materials
- Overlaminates
- Shelf marking
- Label maker
- Integrated coupons
- Affixed Coupons

Features and Benefits

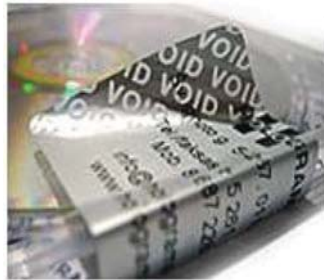
- Custom designed lift patterns
- Backside writeable materials
- "Clean Release" feature
- Superior quality and clarity
- Multiple functionality
- Excellent converting and press performance
- Immediate shipping from Stock (Signature)



Product Security & Tamper Evident

Products/ Applications

- Tamper evident tapes
- Tamper evident Polyart
- Destructible Acetate
- Taggant-modified adhesives
- Pigment-modified adhesives
- Block-out coatings
- RFID label stock
- Specialized Paper and Film



Features and Benefits

- Covert or overt security options
- Warranty Validation
- "Sealed-until-use" requirements
- Evidence of tampering/ substitution
- Protection of vital information
- Theft protection
- Counterfeit protection



Industrial and Technical

Products/ Applications

- Tire Labels
- Drum labels
- Pipe and conduit labels
- HVAC tags and labels
- Automotive applications
- Outdoor power equipment
- Transfer and specialty tapes



Features and Benefits

- Endure high heat
- Withstand high humidity or moisture
- Resist exposure to grease, oil, or solvents
- Handle UV exposure
- UL/CA, RoHS, WEEE compliant



Medical, Pharmaceutical, Health & Beauty

Products/ Applications

- Squeezable/Conformable BOPP
- Clear-on-Clear labels
- Autoclave labels
- Specialty tapes
- Booklet or brochure format labels
- Medical Instrument labels
- Signature tabs
- Medical/Insurance Cards



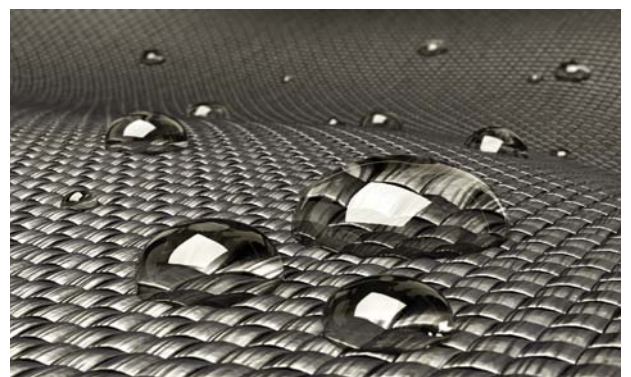
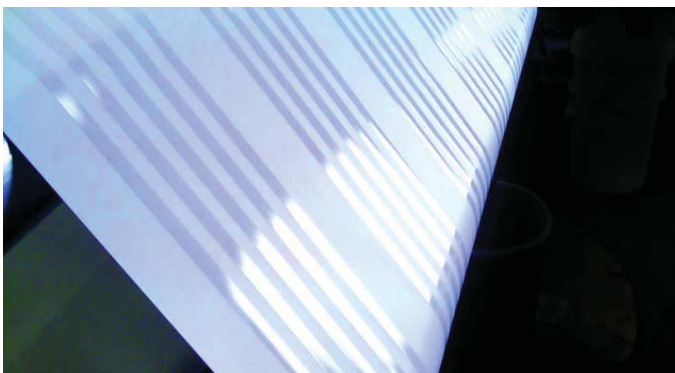
Features and Benefits

- Brand Security technology
- Durability and long life
- Tight pattern tolerances
- Resistant to oils and lotions
- Excellent clarity
- Adhesion to tight radius products



Adhesive and Coating Options

- Toll Coating
- Corona Treating
- Specialty Top Coatings
- Colored/pigmented additives
- Taggants for product security
- Pattern Coatings
- Pattern Silicone release

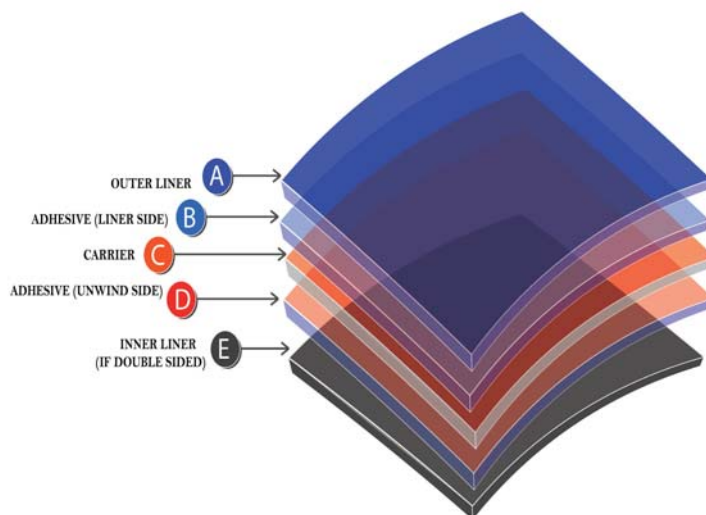


3 Sigma's has the unique ability to design and manufacture custom products to fit end-users' specific needs which than can be utilized to produce specialty tapes for: Transportation/Automotive, Specialty packaging, Building & Construction, Electronics, Alternative Energy (Solar), Retail/Point of Purchase.

Case Study

Recently, one of 3 Sigma's customers came to us with an opportunity. This industrial manufacturer had an application for applying an adhesive coat with a release liner. They wanted to reduce their scrap dramatically, increase the throughput of their production line, and ultimately increase their profitability. 3 Sigma's product development team went to work and quickly provided a specialty industrial tape. The end result by using this custom product, scrap dropped from 30% to 5% and throughput increased by 5 times. These manufacturing efficiencies have improved the company's profitability immensely. So our question to you; Why not challenge 3 Sigma to help you in the same way? Let us drive efficiency and profitability.

3 Sigma can develop and manufacture the following specialty constructions: Pattern Adhesive coating, Single Liner/Double Liner, Extended Liner, Custom Web Widths, Custom Pigmented Adhesives, Security Features.



**Face-stocks,
Liners, Adhesives**

REMOVABLE	Removal from substrates 1=Poor 5=Excellent			APPLICATIONS
	Poly	Steel	Corrugated	
Hot Melt-Rubber				
A204	4	4	4	Good adhesion and removability from corrugated
A303	4	4	4	Reseal labels
A327	4	4	4	Reseal labels
DFC205R	4	3	3	Removable labels where adhesive needs to meet FDA 21CFR 175.125
Emulsion Acrylic				
RE3	5	5	4	Window and floor graphics, other high energy surfaces, no adhesion build
RE5	4	4	4	General purpose removable with minimum adhesion build
RE8	4	4	4	More aggressive removable applications
REP4	5	5	5	Newspaper labels - Reminder notes - Calendar labels
REP10	5	5	4	RPN notes for the outside of US Mail (approved by USPS) - Reminder notes requiring more adhesion than REP4
REP16	5	5	5	Page tabs - Removable labels for high energy surfaces
REP22	5	5	5	Wall border & appliques for textured wall papers
REP142	5	5	5	Wall border & appliques for textured wall papers
Solvent Acrylic				
SR1	5	5	4	Water resistant, outdoor graphics, window and floor graphics, wipes reclosure
SR2	5	5	4	Water resistant, outdoor graphics, window and floor graphics, wipes reclosure
SR3	5	5	3	High chemical resistance, water resistant, outdoor graphics, window and floor graphics, use where higher shearis needed, wipes reclosure
SR4	5	5	4	Water resistant, outdoor graphics, window and floor graphics, wipes reclosure
SR5	5	5	5	High chemical resistance, water resistant, credit card activation labels, "cling" applications
SR6	5	5	4	High chemical resistance, water resistant, for use where optical brightener is needed

Chart represents only a few of our popular adhesives, custom formulations available

Face-stocks, Liners, Adhesives

PERFORMANCE CHART (Pressure Sensitive Adhesives)				
PERMANENTS	ADHESION TO SUBSTRATES 1=Poor 5=Excellent			APPLICATIONS
	Poly	Steel	Corrugated	
Hot Melt-Rubber				
A106	4	5	5	General purpose permanent labels, low surface energy polyolefins, packaging
1023X	5	5	5	Polyolefin films and other low energy surfaces, packaging, quick tack applications
A101	3	4	5	Jewelry Labels, Piggyback label stocks, film face stocks, need for better converting than traditional hot melts
A111	3	4	5	Jewelry Labels, Piggyback label stocks, film face stocks, need for better converting than traditional hot melts
TRL1	5	5	5	Tire Labels, very rough surfaces, extremely low surface energy polyolefins
TRL2	5	5	5	Tire Labels, very rough surfaces, extremely low surface energy polyolefins
A502	5	5	5	Frozen food packages, cold and freezer type applications
DFC107	4	4	5	Fruit labels where adhesive must meet 21CFR175.125 for direct food contact
Emulsion Acrylic				
PE3	4	4	4	General Purpose Permanent
PE18	3	4	4	Laser labels and reseal labels for poly film packages, high shear applications, applications where converting is a key issue
PE21	5	5	5	Low surface energy polyolefins, bottle labeling, quick stick applications
AT2000	3	3	3	Coupon applications for a variety of grocery situations, cold temperature applications
Solvent Acrylic				
SP1	4	4	5	High performance permanent, bottle labeling, durable goods
SP2	4	4	5	Greater Quick Stick than SP1, bottle labeling, durable goods, packaging
SP3	3	4	4	Better chemical and heat resistance than SP1, laboratory applications, extreme high temperatures, electronics, aerospace,
SP4	5	5	5	Aggressive Black Adhesive for block out applications, tape
SP5	5	5	5	Drum Labels, Size Labels for Teflon coated clothing, rough surfaces, durable goods
SP7	4	4	4	Block out for added opacity, reverse printing applications
SP9	4	4	4	Block out
SP10	4	4	5	High performance permanent, bottle labeling, durable goods
SP13	3	3	3	Archival applications, low residual solvent
SP19	5	5	5	High performance permanent with excellent heat resistance for difficult converting applications
SP20	5	5	5	High performance permanent with excellent heat resistance and fiber filled

Chart represents only a few of our popular adhesives, custom formulations available

Manufacturing Capabilities

Core Competencies & Processes

- 13 Coating lines with slot die, Mayer rod, precision roll, roll over roll and gravure systems
- Emulsion adhesives to 80" web width
- Hot-melt adhesives 3" to 20" web width
- Solvent adhesives on the same web
- Cohesives
- In-house custom formulations
- Dual adhesives on the same web
- Dual face-stocks on the same web
- Pattern adhesives and coatings with tight tolerances and/or complex configurations
- Taggant-modified adhesives and coatings
- Pigmented adhesives
- Block-out coatings
- Film or paper top-coating for superior printing and/or face-stock protection
- Self-wound (linerless) constructions
- Complex multi-layer/piggyback constructions
- Silicon and pattern silicon coatings
- Toll-coating for proprietary products or capacity relief
- Roll stocks available on 3" or 6" cores to 40" O.D.
- Sheeting, guillotining and slitting as narrow as a half inch

A few of our Brand Owners:



MOTOROLA



Why Choose 3 Sigma?

- Three Adhesive Technologies under our 85,000 sq ft. facility: Hot-Melt, Emulsion, Solvent
 - Quickest lead times in the industry
 - Access to key decision makers and technical staff
 - Custom Construction/Formulations
 - Access to use our equipment for trial and start projects
 - Knowledgeable and courteous customer service team
- ISO9001:2015 Certified
 - High Quality Standards and Processes
 - Low order minimums
 - Flexible production schedules to meet customer needs, not ours
 - Broad base of product technology



BUSINESS FORMS



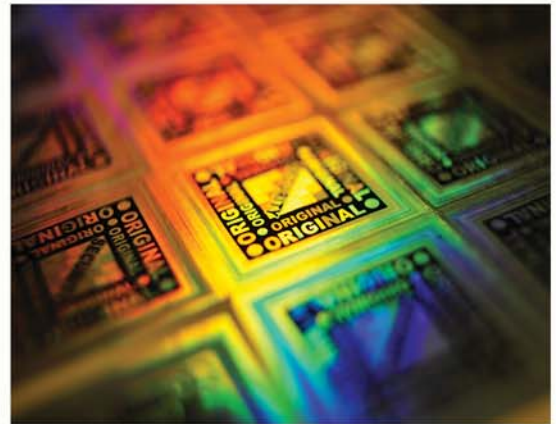
HEALTH & BEAUTY



INDUSTRIAL



SECURITY & TAMPER EVIDENT



GRAPHICS



FOOD & BEVERAGE



A decorative graphic consisting of several overlapping, wavy, blue lines that curve from the bottom left towards the top right, creating a sense of motion and depth. The lines vary in opacity and thickness, giving it a layered, ethereal appearance.

3 Sigma LLC West Stanfield Road Troy, Ohio 45373

www.3Sigma.cc 1-800-347-3091